

Creekline Conservation Kapari Farm, Northampton



BACKGROUND

The Sudlow family have been farming Kapari in the Shire of Northampton since 1975, and is run as a mixed operation of predominantly broadacre cropping and sheep and includes the most northerly Angus stud farm. More than 2,900 ha it covers a mix of soil and landscape characteristics from deep yellow sands to shallow areas with granite and lateritic soils.

Revegetation and fencing has occurred since the 1980s, primarily as a result of controlling impacts to (saline) drainage lines that form the headwaters of the Hutt River. Revegetating the creeklines has been a life-long plan as part of the long-term goal to protect the tributaries of the Hutt River.

This report presents the outcomes of NACC funded incentives for strategic restoration work undertaken between 2013 and 2015 at Kapari.



The involvement of NACC was fantastic. NACC provided advice on how to fill out the forms as well as supply information on the on-ground contractors - Sudlow Family 2018

OUTCOMES



80-90% seedling survival rate and little senescence (death) of established trees and shrubs.

Revegetation is providing a diverse range of habitats, including: flowering shrubs, taller trees which provide shade for “kangaroo’s bedrooms”, and rip lines which have been utilised by dragons for the creation of burrows.

Young Eucalypts were observed to be over 2.5 m tall, indicating that tree species will continue to contribute to percentage cover as they continue to grow.

The high volume of seeds produced by the Saltbush is considered likely to add to the seed bank, recruitment and ground cover within the revegetation area.

Active recruitment of local native saline-tolerant species (e.g. Atriplex, Maireana, Tecticornia sp.) indicates that the revegetation is rapidly moving towards becoming sustainable and functional.

40

Hectares revegetated to improve native riparian vegetation

23,000

Seedlings planted to reduce salinity and improve vegetation quality

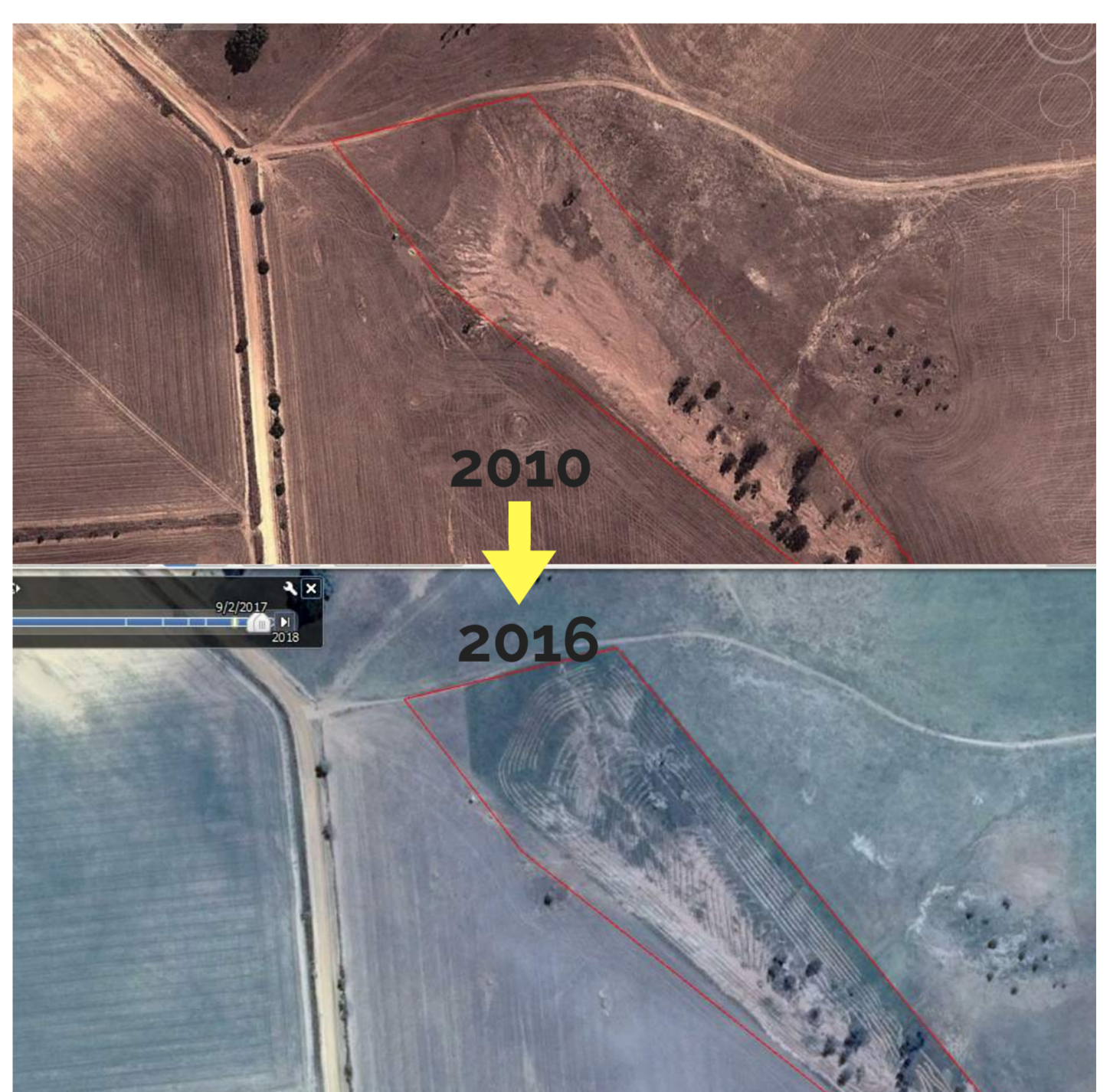
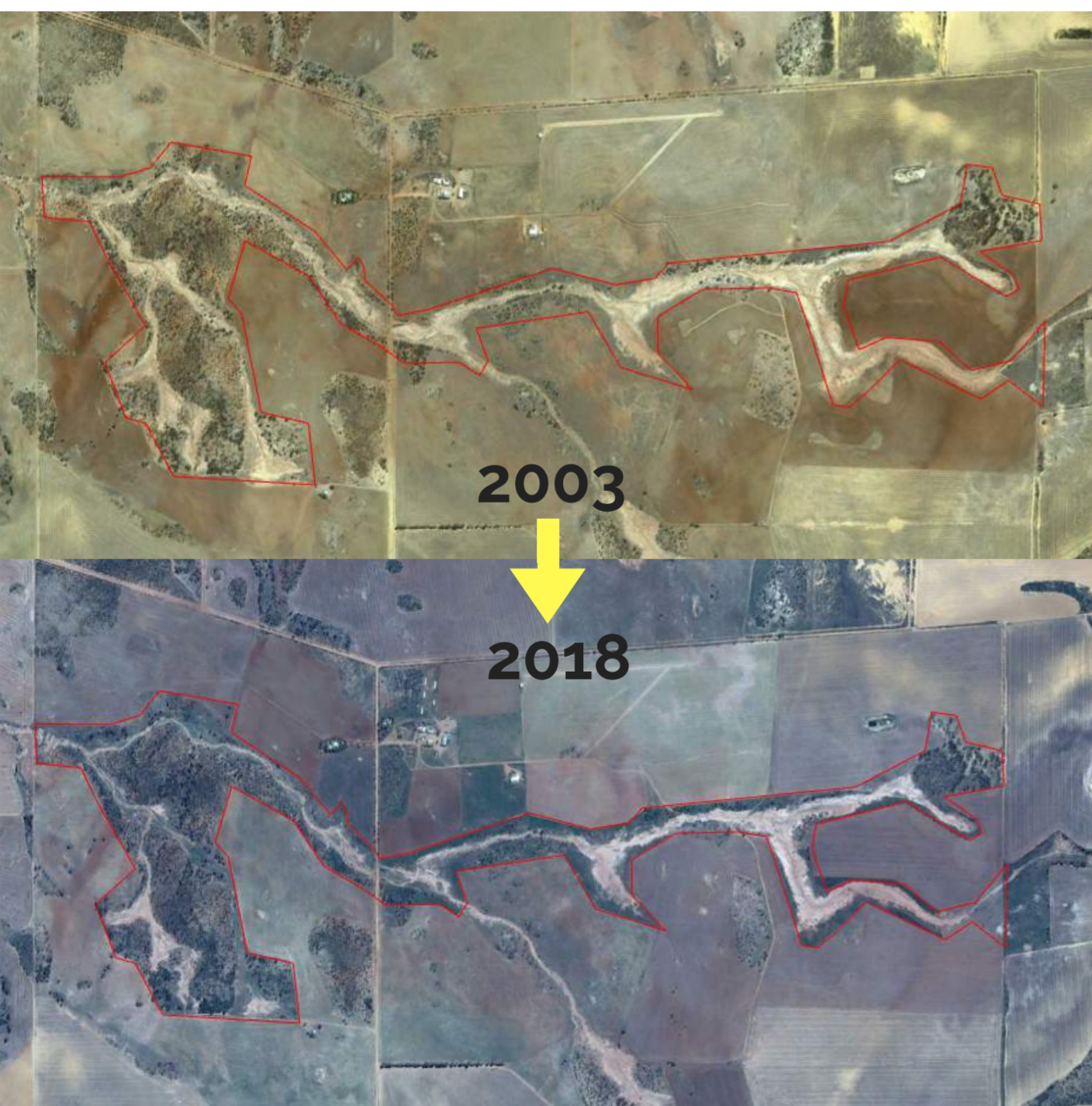
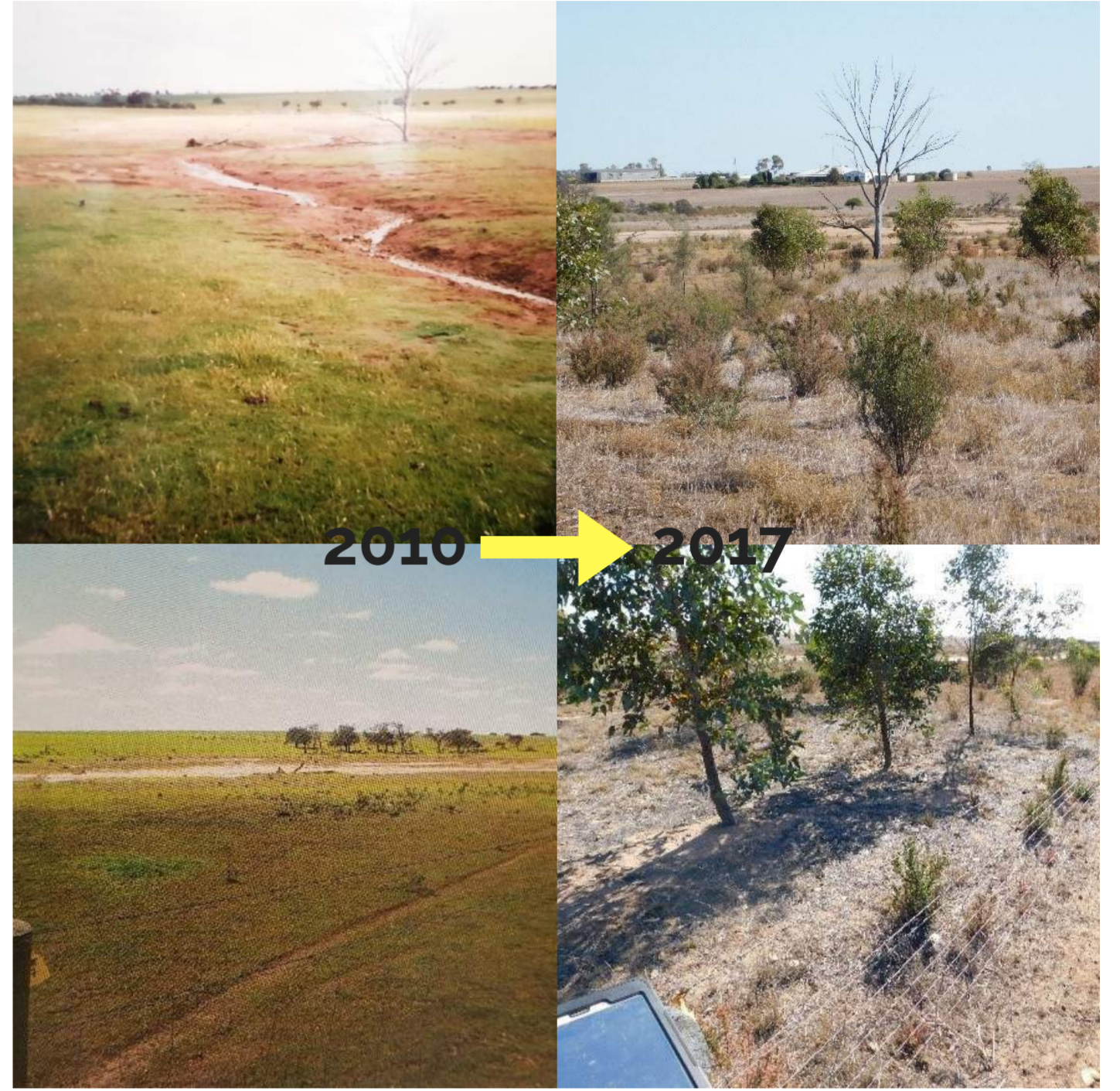
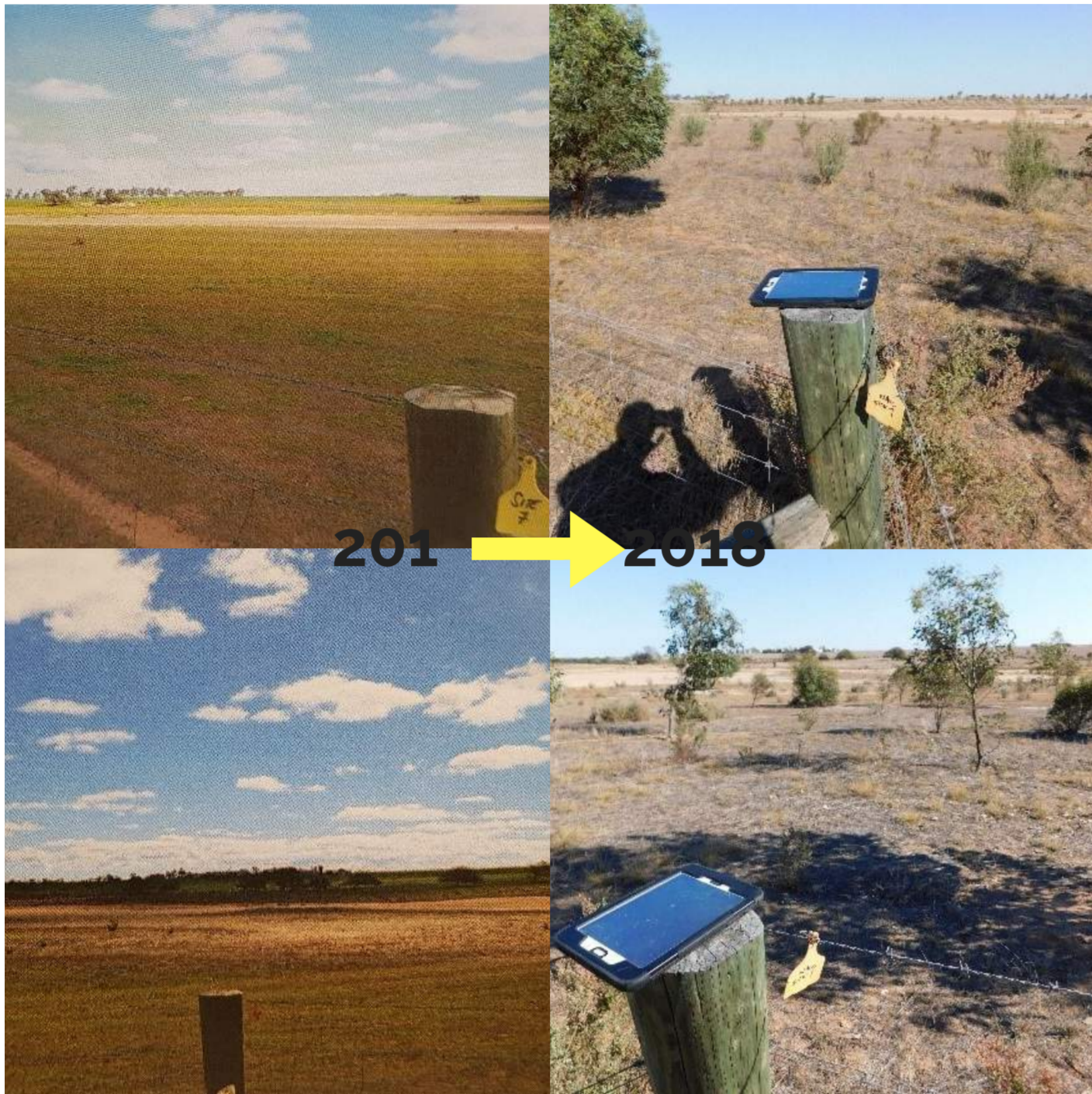
19

Kilometres of fencing installed to protect riparian habitat

220

Hectares of riparian habitat with fencing protected

Creekline Conservation Kapari Farm, Northampton



The protection of the Hutt River tributaries has long-term environmental and social benefits for the downstream catchment. - Tony Sudlow