



Featuring in this edition

- Royalties for Regional grants scheme
- News from the Australian Desk
- Incentives EOIs – still open
- Local events and
- Other important news across the Nation

Contact: Stanley Yokwe,  
Regional Landcare Facilitator, NACC  
18 Chapman Road, Geraldton, WA  
6530; P: 9938 0105; Mob: 0428 649  
775; E: [Stanley.Yokwe@nacc.com.au](mailto:Stanley.Yokwe@nacc.com.au)  
<http://www.nacc.com.au>

## STATE FUNDING OPPORTUNITIES

### Royalties for Region Regional Grants Scheme 2010-11 funding round open

Up to \$9million in the latest round of the State Government's Royalties for Regions' Regional Grants Scheme (RGS) will be available in a contestable grants program with \$1 million to go to each of the nine development commissions for applicants within their region. Individuals and organisations can now apply directly to their development commissions for funding for projects aimed to improve economic and community infrastructure and services or help attract investment, increase jobs or improve the quality of life in regional WA. The application deadline is on March 10, 2011. A list of Regional Development Commission contacts is available at: <http://rdl.wa.gov.au/Content/RD/Commissions.aspx> or phone 9217 1400.

## NEWS FROM AUSTRALIAN GOVERNMENT DESK

### Australian Government has released Carbon Farming Initiative (CFI) detail

Early this month, the Federal Government has released draft legislation and methodology guidelines for the CFI scheme. The government is making these early drafts available now to give stakeholders more information on how the proposals described in the consultation paper released last November would work in practice. "Potential participants in the scheme will be able to gauge how they might get involved and help to identify any gaps or unintended impacts of the legislation. "They will also be able to see the type of information that independent experts on the Domestic Offsets Integrity Committee (DOIC) will be assessing in draft methodologies and the evidence DOIC will require to recommend a methodology to the government for approval."

Further information on the Carbon Farming Initiative is available on the Department of Climate Change and Energy Efficiency website at: <http://www.climatechange.gov.au/cfi>.

### Consultation has been extended on the Australian Government's Carbon Farming Initiative Consultation paper

On 22 November 2010, the Australian Government released a consultation paper on the Carbon Farming Initiative and public submissions closed on 21 Jan 2011. The submission time has been extended and now closes on Feb 4, 2011.

Following the consultation period, the government will take into account issues raised by stakeholders in finalising the legislation for introduction in Parliament in the first half of 2011, to allow scheme commencement in mid-2011.

Farmers and landowners wishing to provide feedback on the proposed scheme design can put forward their own submission or contact their industry bodies who can represent their views before submissions close until 4 February. The consultation paper and supporting information can be accessed from [www.climatechange.gov.au/cfi](http://www.climatechange.gov.au/cfi).

## INCENTIVES - EXPRESSIONS OF INTEREST STILL OPEN

### NACC Wind erosion and Rabbit control incentives

NACC has recently reviewed and updated their incentives program. Tree crops now have further options on top of just oil mallees that include sandalwood and brushwood. The fodder shrub (saltbush) incentive has been doubled to a maximum incentive of \$8,000 which could help plant up to 47 ha of saltbush. There are also other incentives available: perennial pastures, strategic revegetation and rabbit control.

The incentives funded through the Australian Government's CFOC Program, will be offered on first come first served basis. Sites will be assessed against specific guidelines and criteria to ensure that on-ground works funded through the project deliver landscape-scale change and value for money.

Farmers and land managers undertaking on-ground works will also be offered 12 months membership to appropriate industry groups to enable them to access the latest technology and management information available. In addition to offering incentives, the project will also provide training and information dissemination opportunities to farmers and land managers involved in the project.

For more information regarding NACC's wind erosion incentives contact your local NRMO or phone Sarah Jeffery, Sustainable Farming Coordinator on 9938 0110 or Marieke Jansen, Acting Biodiversity Coordinator on 9938 0108.

### Moore fencing incentives available

- Are you in the Moore River catchment and planning to fence off creek lines and remnant vegetation this year?
- Do you want to contribute to the long term protection of the Moore Catchment's natural assets?
- If so, then phone the Moore Catchment Council on 9653 1355 to discuss the new incentives available.

Through the state funded 'Recovery and Protection of the Moore River Catchment's Threatened Natural Assets' project, the MCC can offer landholders \$3,000/km for fencing and \$500/ha for re-vegetating creek lines, and \$4,000/km for fencing off priority remnant vegetation.

This project has enough money to fence 25km and re-vegetate 50ha of the Moore River and its tributaries, and 15km of priority native vegetation. These incentives are offered on a first come/first served basis and will be subject to a site assessment for suitability. Works need to be completed by September 2011.

For more information please phone Rachel or Ingrid at the MCC office at 9653 1355 for further details.

## UPCOMING LOCAL EVENTS

### Summer Greening and Feeding Field Day

7am – 11am Wednesday 16<sup>th</sup> February 2011

The Summer Greening and Feeding Field day will be starting at 7am at Gutha Community Hall (30km north of Morawa) with a BBQ breakfast. Following a scrumptious breakfast will be a few presentations before heading out into the field.

Presenters include Dr Hayley Norman from CSIRO who is an expert on saltbush and the nutritional benefits it has for livestock. Mike Clarke from DAFWA who will give you some ideas on how you can potentially change the land use of your unproductive soils in the NEAR. Dr Helen Blake also from DAFWA will be talking about feeding of livestock particularly over summer. Euan Beaumont from Carbon Diversity will be talking about what carbon means to farmers including the new Carbon Farming Initiative (CFI) scheme and tree crop options and more.

The field walk will be at Garry and Debbie Collins' farm 'Spearwood'. Here we will look at and discuss perennial grasses and oil mallees and the benefits/role they have in the farming system.



CARING  
FOR  
OUR  
COUNTRY



MOORA - MILING PASTURE  
IMPROVEMENT GROUP



For more information and registration please call Sarah Jeffery at NACC on 9938 0110 or Kate Najjar at NEFF on 9964 7022. RSVP is essential for catering purposes. There is no cost.

Summer Greening and Feeding is proudly sponsored by NACC, NEFF, MFIG, PFF, YYCMG, Landcare Australia, Woolworths, Caring for our Country and the WA Government.

## 2 day More Meat, Better Pastures workshop

These workshops are presented by Dr Matt Carrick of Bos Veterinary Services. The workshop will include 1 day inside and the other day out in the field. Covered in the course will be how to calculate food on offer, how to do a feed budget, how to manage your pastures to get better production, ground cover, rotational grazing and lots more.

14<sup>th</sup> & 15<sup>th</sup> February 2011 – Moora  
RSVP or more information call Ingrid or Rachel or 9653 1355

17<sup>th</sup> & 18<sup>th</sup> March 2011 – Mingenew  
RSVP or more information call Donna on 9928 1646

28<sup>th</sup> and 29<sup>th</sup> March 2011 – Badgingarra  
RSVP or more information call Jennifer on 9651 4008

Cost \$165 (GST inclusive) for farmers who have taken up NACC perennial pastures incentive or \$660 (GST inclusive) for farmers without the incentive.

Or please feel free to contact Sarah Jeffery at NACC on 9938 0110 for more information or RSVP.

The workshop is supported by NACC, WMG, MCC, MIG, YYCMG, Shire of Chapman Valley and the WA Government with funding from Caring for Our Country.

## Red Card for Rabbits & Foxes

### A good fox is a dead fox! And the same goes for rabbits and feral cats!

The Mingenew Irwin Group (MIG) is running the Red Card for Rabbits and Foxes again this year on Friday 25 March. They are encouraging all their land managers to get their teams together. The event will start on Friday at sunset. Teams are welcome to shoot all night and on Saturday morning there will be a BBQ to tally of the cull. Once again Stockbrands Co. is the major sponsor and will donate \$5 for each fox or cat shot to the Royal Flying Doctor Service. There will also be local prizes given out.

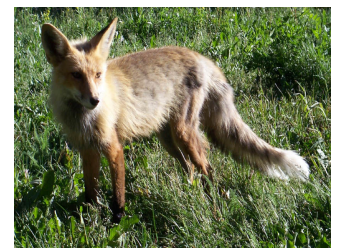
MIG is also encouraging land managers to lay baits on their properties over the 6-week 'hot period' between 1<sup>st</sup> March – 15<sup>th</sup> April. Shooting and baiting is an integrated approach for maximum impact. Remember only trained and authorised landholders are able to purchase and lay baits and you need to fill out a '1080 baiting application form'.

For further information and to register your team please contact Donna Rayner Tel 9928 1646 or Mob 0427 281 001

## Another Red Card for Rabbits and Foxes with West Midland Group

### Wanted Death!

The West Midlands Group is hosting a "Red card for Rabbits and Foxes in the weekend on the 25<sup>th</sup>- 27<sup>th</sup> Feb. Landholders are encouraged to go shooting on Friday and Saturday nights. For every fox and cat shot, \$5 will be donated to Royal Flying Doctor Service by 'WA' owned Stockbrands. There will be a BBQ breakfast on the Sunday at the Warradarge Community Rooms, which is behind the Halfway Mill Roadhouse starting at 8am. There would be a tail counting held on Sunday 27<sup>th</sup> Feb, Warradarge Community



room and prizes to be announced at breakfast. For information and to register your team contact Jennifer Bairstow on 9651 4008 or 0409 889 501.

## Financial Management Short Course for women in agriculture

Westpac is holding a series of financial education short courses nationally for women in agriculture. In our region it would be in Dalwallinu (Rec Centre, Oval Room in Myers Street) on 21<sup>st</sup> Feb 2011, starting 9:30 – 4 pm. This abridged version of Westpac's Financial Management 101 workshop will teach you about the fundamentals of financial management in your business – including what financial statements can really tell you, and how you can use that information to your advantage every day. It's a must for business owners and management staff alike.

We'll help you learn how to:

- Interpret your financial statements
- Measure and analyse your financial performance
- Quickly and effectively diagnose a problem, then implement a solution
- Identify ways to improve efficiency, cash flow, and profits
- Use a 'break even analysis' to recognise the true impact of changes to price, volumes, and costs on your bottom line

This short course has been put together to inspire, inform, promote and connect Western Australian women - no matter what you do or who you bank with.

Registration Cost: \$85 per participant (incl GST). Includes: Reference manual and all day catering. This program is heavily subsidised by Westpac as the normal cost to attend is \$445 per day for Westpac customers. This discounted pricing is extended to all participants, regardless of who they bank with.

### Lunchtime speakers:

Sue Middleton, Moora Citrus. 2010 RIRDC Rural Woman of the Year, WA & National.

For more information and to register your interest contact Amanda Day at (08) 9426 2221 | Mob 0407 842 997 | Email [aday@westpac.com.au](mailto:aday@westpac.com.au).

## Climate Change Research Strategy for Primary Industries (CCRSPI) Conference

The Department of Agriculture, Fisheries and Forestry (DAFF) is co-sponsoring the inaugural CCRSPI Conference in Melbourne on 15-17<sup>th</sup> February 2011 at Melbourne Cricket Ground. Presented by the Climate Change Research Strategy for Primary Industries team, the CCRSPI conference will bring together some of Australia's foremost scientists, leading producers and policy makers in the climate change and primary industries space, along with international keynote speaker Professor M.S. Swaminathan.

Professor Swaminathan is an Indian agriculture scientist and widely recognised as the leader of the Green Revolution in India, for his role in introducing high-yielding varieties of wheat, fertilisers and irrigation to the country.

### Inclusions

- The conference package automatically includes the CCRSPI Conference Dinner the night of Tuesday February 15, although separate dinner tickets may be purchased for partners
- The public lecture at BMW Edge, Federation Square at 5.30pm Wednesday February 16
- Three full conference days and associated catering

### Discount offers for students and farmers:

Students will need to pay \$550 for three full days of conference. This represents a 50% discount on the full conference price. Farmers also qualify for special rates: \$660 for bookings.

To register your interest go to [www.theccrspiconference.com.au](http://www.theccrspiconference.com.au) or alternatively contact Esther Price Promotions Phone: 61 8 9525 9222; Email: [donna@estherprice.com.au](mailto:donna@estherprice.com.au)



## OTHER IMPORTANT NEWS ACROSS THE NATION

### CSIRO needs landholders' participation in a project to measure carbon in trees

CSIRO is currently looking for involvement of the landholders in Northern Agricultural Region to investigate how much are the nation's landcare plantings really worth in terms of carbon sequestration?

Better answers to this question are needed, which is why it has become the focus of a national research project. Specifically, the project is looking for Landcarers with revegetation plantings that they are willing to sacrifice to the long-term good of understanding the contribution of planting programs to emissions abatement.

CSIRO scientists plan to "destructively sample" half-hectare blocks of environmental plantings and make direct measurements of biomass carbon from different vegetation types, planted in different areas and different configurations.

The results will be built into the National Carbon Accounting System (NCAS) as "carbon accumulation curves" that will provide a picture of how much carbon is being sequestered by plantings at various stages in their growth.

"Unfortunately, the study requires destructive sampling of half a hectare, which is a tough ask for landholders who have painstakingly worked to establish their plantings."

However according to Keryn Paul of CSIRO, farmers who participate in this project will be compensated – and they will know that their work has made an important contribution to climate mitigation in Australia.

The project is jointly funded by the Department of Climate Change and Energy Efficiency (DCCEE) and CSIRO, in collaboration with several State government departments, universities and industry bodies.

The project aims to increase the capacity of the NCAS to account for environmental plantings across different sites and management regimes. The aim is to demonstrate optimum conditions for carbon sequestration in environmental plantings, and thus to reward good management and site selection. Site sampling will be done on the principle that you can't make an omelette without breaking eggs.

Some sites will be harvested using chain saws, but where possible, harvesting will be done by a new biomass harvester (an Australian innovation jointly developed by Biosystems Engineering, Future Farm Industries CRC and others) that removes all vegetation near ground level.

CSIRO is aware this isn't a happy prospect for those who have invested in plantings, so it is offering a good compensation package.

In return for sacrificing 0.5ha of plantings to research, CSIRO will:

- replant the plots it harvests with tube stock, using species of the landholder's choice;
- fix damage to roads or fences made during any of the visits to sites by CSIRO and its contractors; and
- establish another environmental planting stand on the property at a location of the landholder's choice, up to a total value of \$10,000.

Your contribution will also be acknowledged in any publications or presentations of the work. Besides, this will put our region in a national spotlight in terms of baseline data in terms of carbon sequestration from trees. Not every site will be suitable though.

CSIRO is looking for sites that ideally:

have information available on date of planting, planting technique, species used, establishment success, weed control, any disturbances;

- have a slope of less than 10 degrees;
- are not rocky, and are clear of wire and posts;



CARING  
FOR  
OUR  
COUNTRY



MOORA - MILING PASTURE  
IMPROVEMENT GROUP



- contain trees that are, on average more than 15 centimetres in diameter at the base, planted in rows of at least two metres apart;
- have access for a 13m harvester and room ( at least 20m from the end of the row to the nearest fence or other obstruction) to allow the harvester to turn into each row and then get out of the row at the far end.

There also needs to be room for a tractor-drawn bin alongside the harvester to catch and weigh the biomass.

Interested landholders can arrange a preliminary site visit with CSIRO to assess feasibility and harvesting logistics.

For more information, Contact Stanley Yokwe, Regional Landcare Facilitator for NAR at (08) 9938 0105 or email [Stanley.Yokwe@nacc.com.au](mailto:Stanley.Yokwe@nacc.com.au) or alternatively you can contact directly Keryn Paul of CSIRO [Keryn.Paul@csiro.au](mailto:Keryn.Paul@csiro.au).

### Super results for Moore Catchment Saltbush Project

The latest saltbush project delivered by the Moore Catchment Council and Moora-Miling Pasture Improvement Group, and supported by the Northern Agricultural Catchments Council, has seen many more seedlings planted in the Moore River catchment than originally budgeted. The project, funded through the federal Caring for Our Country Natural Resource Management program, promised to plant around 144,000 saltbush seedlings on salt and wind erosion affected farms in the eastern catchment. Instead over 176,000 saltbush seedlings were able to be planted over 270ha thanks to the close involvement of Ian Pulbrook of Greenoil Nursery, Mingenev, who supplied seedlings and planting services.

Twenty farms were involved with installing the saltbush pastures, from Gunyidi down to Gabalong. Tony White, president of the MMPIG, said ‘saltbush pastures are an important part of farming systems in this area. They will help drought proof your farm and protect the land from the natural elements whilst adding extra feed at critical times of the year.’ The site preparation and planting methods are tipped to be the key for the good establishment seen even with the dry winter experienced. Tony explained ‘we have had a great result all round due mainly to the mounding carried out in the saltier and lower lying areas, and this has helped transform previously unproductive areas into useful paddocks.’ The project also hosted a successful saltland pastures workshop in March and was a feature part of the MMPIG spring field days in 2009 & 2010.

Rachel Walmsley of MCC said ‘this is the second successful saltbush project delivered by the MCC in partnership with MMPIG. In the last three years, over 307,000 saltbush seedlings have been planted in the Moore River catchment through these federally funded projects. The combination of a NRM group, a grower group and a nursery has helped deliver another fantastic result this year.’ A project booklet and DVD are available from the MCC office on 9653 1355. For an online taster – visit [www.youtube.com/MooreCatchNRMO](http://www.youtube.com/MooreCatchNRMO)



CARING FOR OUR COUNTRY



MOORA - MILING PASTURE IMPROVEMENT GROUP

