



Regional Landcare Facilitator

Hosted by Northern Agriculture Catchments Council Incorporated
for the Northern Agricultural region



Inside this issue

- Current funding opportunities
- Environmental incentives for farmers
- Landcare projects
- Local and national events
- Environmental award

Contact: Stanley Yokwe,
201 Lester Avenue, Geraldton, WA
6530; P: 9938 0105; Mob: 0428 649
775; E: Stanley.Yokwe@nacc.com.au
www.nacc.com.au

CURRENT FUNDING OPPORTUNITIES

2011-12 Community Action Grants round now open

Community groups around Australia can now apply for grants of between \$5,000 and \$20,000 to help protect and conserve their local environment and natural resources. \$5 million will be available in the 2011-12 Community Action Grants round to help local communities undertake activities such as revegetating landscapes, rehabilitating dunes, removing weeds, controlling pests, and improving sustainable land management practices. Importantly the Community Action Grants can be used for on ground works or capacity building within the community.

In response to community feedback, eligibility has been broadened this year to include all community groups that deliver environmental and sustainable agriculture projects. Individuals are not eligible.

Applications for the 2011-12 Community Action Grants will close Monday 1 August 2011. More information on Caring for our Country's Community Action Grants, including how to apply, is available at www.nrm.gov.au or by calling 1800 552 008.

Nuffield Scholarship opens for farmers

Applications for Nuffield Scholarships close 30th June.

The Nuffield program begins with six weeks of group travel touring leading agricultural nations including China, Brazil, USA, Canada and Europe. Scholars then focus on a topic of value to their business and industry, with a further 10 weeks travelling the world investigating their chosen research.

For more information and selection guidelines, contact Jim Geltch Tel: 03 5480 0755, or enquiries@nuffield.com.au.

ENVIRONMENTAL INCENTIVES AVAILABLE AT NACC

NACC Wind erosion incentives

NACC has recently reviewed and updated its incentives programs. Tree crops can now include sandalwood and brushwood as well as Oil Mallees. The fodder shrub (saltbush) incentive has been doubled to a maximum incentive of \$8,000 which could help plant up to 47 ha of saltbush. There are also other incentives available: perennial pastures, strategic revegetation and rabbit control.

The incentives funded through the Australian Government's Caring for Our Country Program, will be offered on a first-come-first-served basis. Sites will be assessed against specific guidelines and criteria to ensure that on-ground works funded through the project deliver landscape-scale change and value for money.

Farmers and land managers undertaking on-ground works will also be offered 12 months membership to appropriate industry groups to enable them to access the latest technology and management information available. In addition to offering incentives, the project will also provide training and information dissemination opportunities to farmers and land managers involved in the project.

For more information regarding NACC's wind erosion incentives contact your local NRMO or phone Sarah Jeffery, Sustainable Farming Coordinator on 9938 0110.

LANDCARE PROJECTS

Restoration and enhancement of a small Moore River tributary.

From Ingrid Krockenberger – Moore Catchment Council

Work is underway on West Koojan-Gillingarra LCDC's project to restore a small Moore River tributary at Gillingarra. The project is jointly funded by the WA Department of Water and the Australian Government's Caring for our Country program.

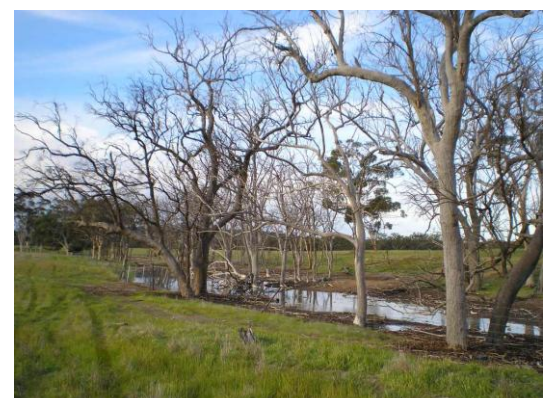
Sediments deposited during the Moora floods have resulted in formation of sandbanks and the junction with the river has been blocked with silt, impeding water flow from the area. Over the last decade, local elevated groundwater and the impeded water course has resulted in the concentration of salt which slowly trickles into the Moore River. Salinisation has led to the deaths of ancient eucalypts and other vegetation of the tributary, and threatens riparian vegetation of the Moore River.

The project will remove excess sediments in order to restore the previous flow regime, under the supervision of Department of Water. Machinery is being used to re-create the channel with a natural appearance, as similar as possible to the original form. The riparian zone and a wide buffer will be revegetated with seedlings grown from locally-collected seed, as well as salt- and waterlogging-tolerant seedlings provided by the Department of Water. Fencing will be erected to protect the seedlings and riparian zone from stock.

It is anticipated that restored drainage will flush accumulated salt from the stream. Revegetation in an 18 hectare buffer will increase water use at the site, lowering the water table and improving water and soil quality.



Earthworks are underway to restore the original flow regime. Water is flowing from the area and the next



Death of ancient eucalypts due to impeded drainage. The site will be revegetated in a wide buffer using locally

The planted trees and shrubs will improve the habitat value of the site by providing diverse species and structural complexity as they mature.

The Moresby project

The Moresby Ranges Plan Implementation Phase 1 and engagement project funded under the State NRM Community grant administered by the Department of Agriculture and Food is progressing well. So far 7.5 km of fencing has been installed protecting 95 ha of remnant vegetation, surface water management plans have been prepared for four properties and feral animal control activities occurred from March to May 2011. Construction of surface water structures will occur as soon as there is reasonable rainfall.

The Shire of Chapman Valley administers this project under the guidance of its NRM management committee. For further information, please contact Jim Gales on 9920 5011.

LOCAL AND NATIONAL EVENTS

Liebe Group Women's Field day

The Liebe Group Women's Field Day is on again this month. On Tuesday 21st June at the Oval room in the Dalwallinu Recreation Centre, Liebe Group will run an enlightening and inspiring day for women in agriculture. The purpose of this event is to increase the management capacity of women to build sustainable future for a family, farm business and the agricultural industry.

The day consists of a series of presentations from researchers, consultants and inspiring local women, on topics prioritised by the Liebe Group Women in Agriculture subcommittee. Liebe Women's Committee Chair, Anita Dickins, feels the day is important for all rural women.

"The day is about recognising the invaluable role that women, be they spouses, mothers or farm business partners, play in the future of our rural communities. We hope that each attendee leaves the day feeling reconnected, supported and inspired to work within their family business and our local farming communities.' The group is compiling a diverse agenda, which includes two very unique keynote speakers", she said.

The first keynote is Maggie Dent, who is a specialist in building resilience into the lives of business people, parents, adolescents and young children. Ms Dent currently runs her own business called "Esteem Plus" that aims to inspire, encourage and assist people of all ages to take a positive step forward in their lives in order to maximise their human potential.

The other keynote is Professor Lyn Beazley, who is in the chief scientist of Western Australia. Professor Beazley has recently been inducted as an inaugural member of the WA Hall of Fame for Women in recognition for her contribution to the WA community. As chief scientist, Professor Beazley plays an important part in providing the State Government with advice on topics that are important to the future direction of science and innovation in WA.

Morning tea will be provided plus a delicious two course lunch with wine, served by the lovely men of the Liebe Group. The cost of entry is only \$30 for Liebe Group members and \$60 for non-members, so please register your name early to secure your spot! As always payment is due prior to the day. Look out for the Women's Field Day flyer coming to you soon. To register for the day, please call the Liebe office on 08 9661 0570 or email: admin@liebegroup.asn.au.

Pasture Cropping/Grazing Cereal Field Walk

The Mingenew Irwin Group will run a pasture cropping/grazing cereal field walk on 30 June 2011 on the farms around Irwin. Participants will visit local farmers who are trying out innovative approaches such as grazing cereals, pasture cropping over sub-tropical perennials for grain production and boosting biomass.

For more information please contact Jane Bradley on 9928 1645 or jane@mig.org.au.

Register your site for National Tree Day now!

Now in its 16th year, National Tree Day has seen over 16 million native trees, shrubs and grasses planted, thanks to the support over 2.5 million volunteers. But in 2011, you can help again.

Each year hundreds of Landcare groups around Australia register sites for National Tree Day, engaging the local community in land care and tree planting activities which contribute to a magnificent national effort. All public sites are promoted on Landcare Australia Ltd website which will help local residents find your site.

Planet Ark's National Tree Day is Sunday July 31st and Schools Tree Day is on Friday July 29th, although registered sites are now covered by insurance for activities on any day. So every day is tree day.

To register call the Tree Day Hotline on 1300 88 5000 – Because Life is Better with Trees.

Western Australian Environment Awards 2011, 10th Anniversary



Nominations now open

Are you involved in flora and fauna conservation or wildlife rehabilitation? Are you working to conserve native bushland, wetlands or estuarine environments? Has your business implemented initiatives to minimise waste or implemented environmental sustainable practices? When was the last time you, the community group you worked with or the business you are employed by gained public recognition for achievement in environmental care and biodiversity conservation? Time to recognise work well done?

Why not nominate yourself or others in this special 10th anniversary WA Environment Awards!

Entry is free and nomination forms can be filled out on-line. This year there are 11 categories:

- Community Achievement - Metropolitan
- Community Achievement - Regional
- Environmental Sustainability
- Environmental Education and Communication
- Rivers, Estuaries and Wetlands
- Government Leading by Example
- Small Business Leading by Example
- Biodiversity Conservation
- Bush, Land and Waterways

- Resource and Waste Management
- Corporate Business Leading By Example

Nominations close on Friday, 29 July 2011. To enter please download the Nomination and Submission forms, fill out and email, or if you prefer print out and post in.



CARING
FOR
OUR
COUNTRY



MOORA - MILING PASTURE
IMPROVEMENT GROUP

