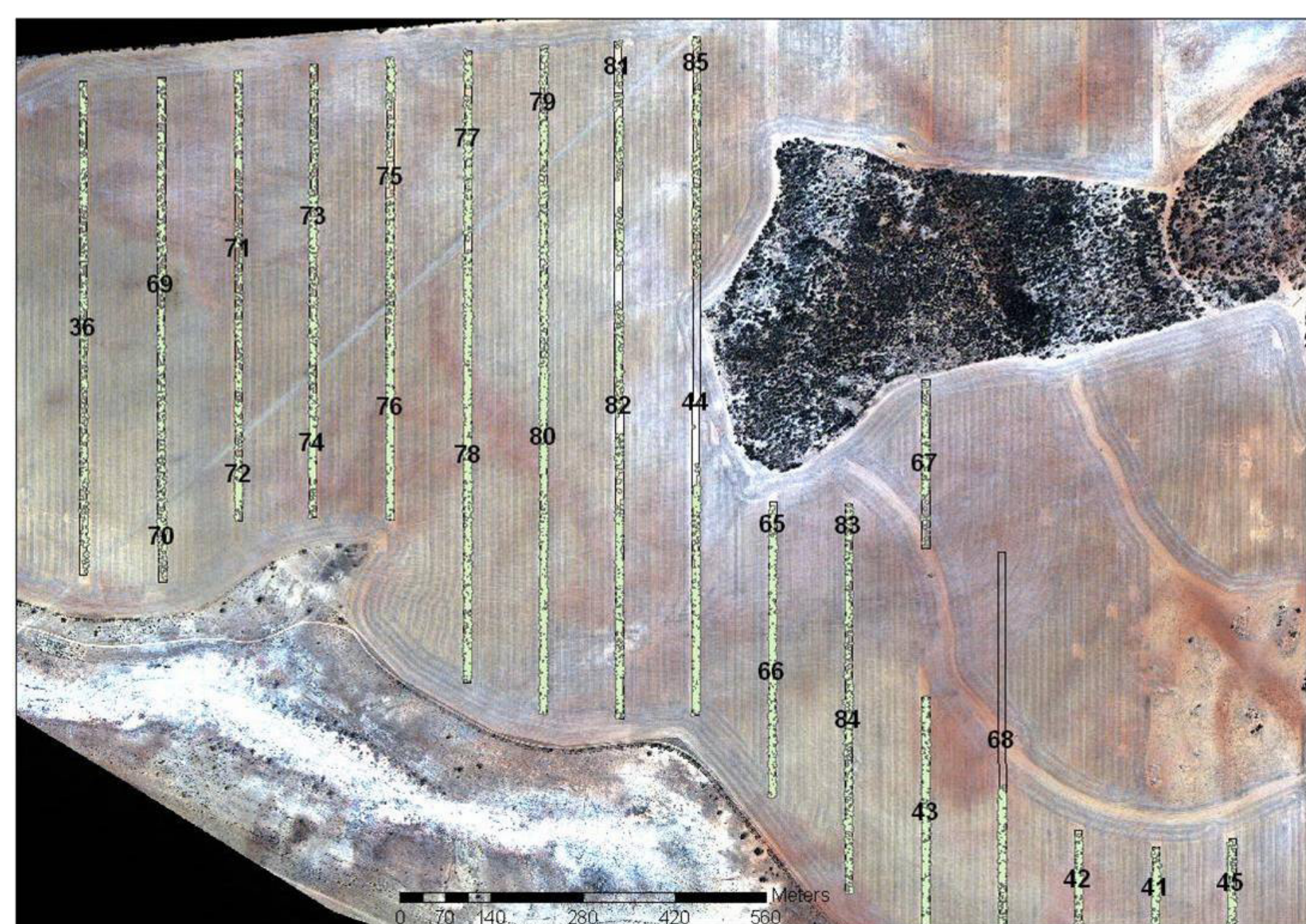


Project Outline

The CarbonWatch project was initiated following interest from the forest industry in Western Australia in how remote sensing could be applied to cost effectively manage, monitor and measure the production of carbon offsets from forestry projects at the farm scale. CarbonStart addresses the planning component of such projects.



Aim

CarbonStart was developed to address three main obstacles confronting anyone within, or looking to join, the carbon offset industry, by utilising remotely sensed imagery and other spatial data. These obstacles may be summarized as ;

“How can I efficiently find land suitable for biosequestration projects?”

“How can I determine that the areas identified are eligible to be part of the carbon trading scheme under the applicable legislation?”

“How do I acquire the necessary eligibility information and present it a format suitable for inclusion in a GreenHouse Gas (GHG) Report to meet the reporting guidelines of the trading scheme

How was it achieved

The Satellite Remote Sensing Services (SRSS) Branch of Landgate has a strong record of developing remote sensing applications for NRM applications.

CarbonStart has utilised the same sets of skills which have produced other remote-sensing based NRM applications such as FireWatch and LandMonitor, but this time in consultation with the forestry industry and those at the forefront of the emerging carbon offset industry in Western Australia.

Such consultation identified the areas where satellite imagery could benefit the planning, monitoring and measurement requirements of forestry-based carbon offsets projects. SRSS then developed remote sensing and spatial datasets useful for each of these project components and developed web applications to make them accessible.

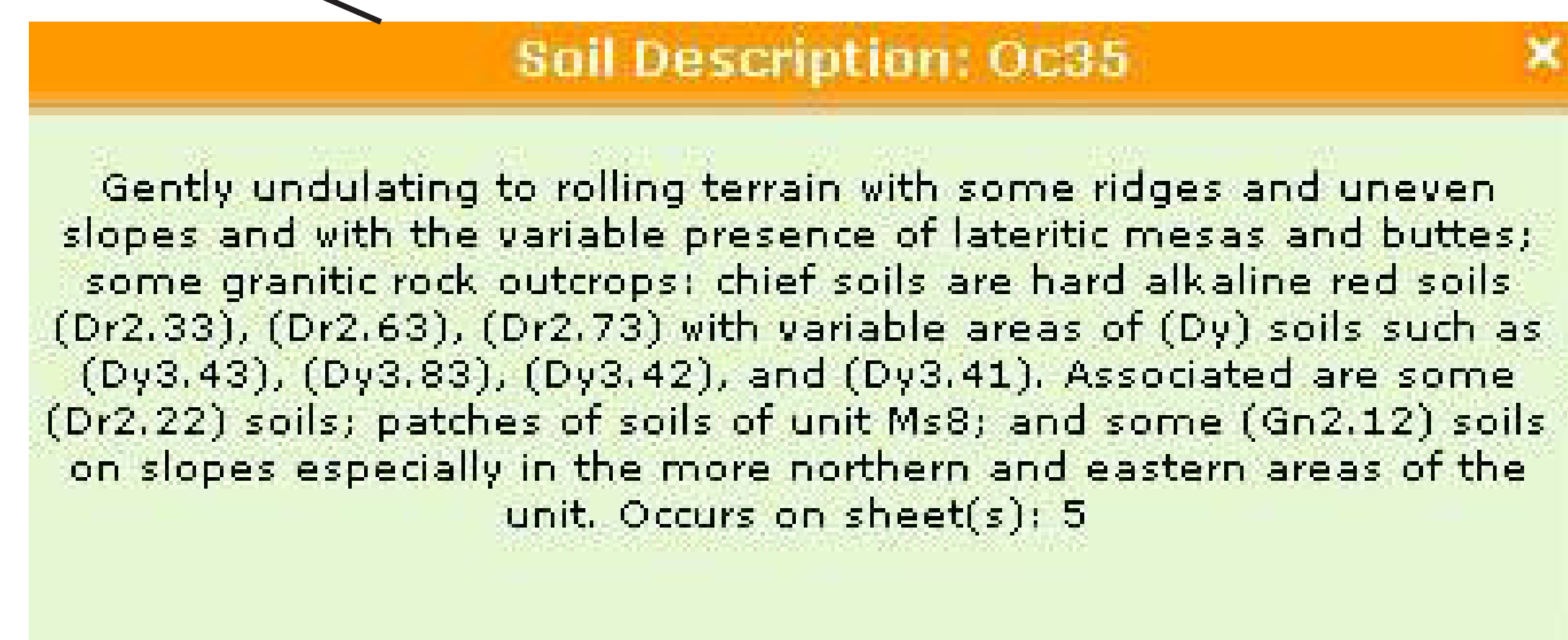
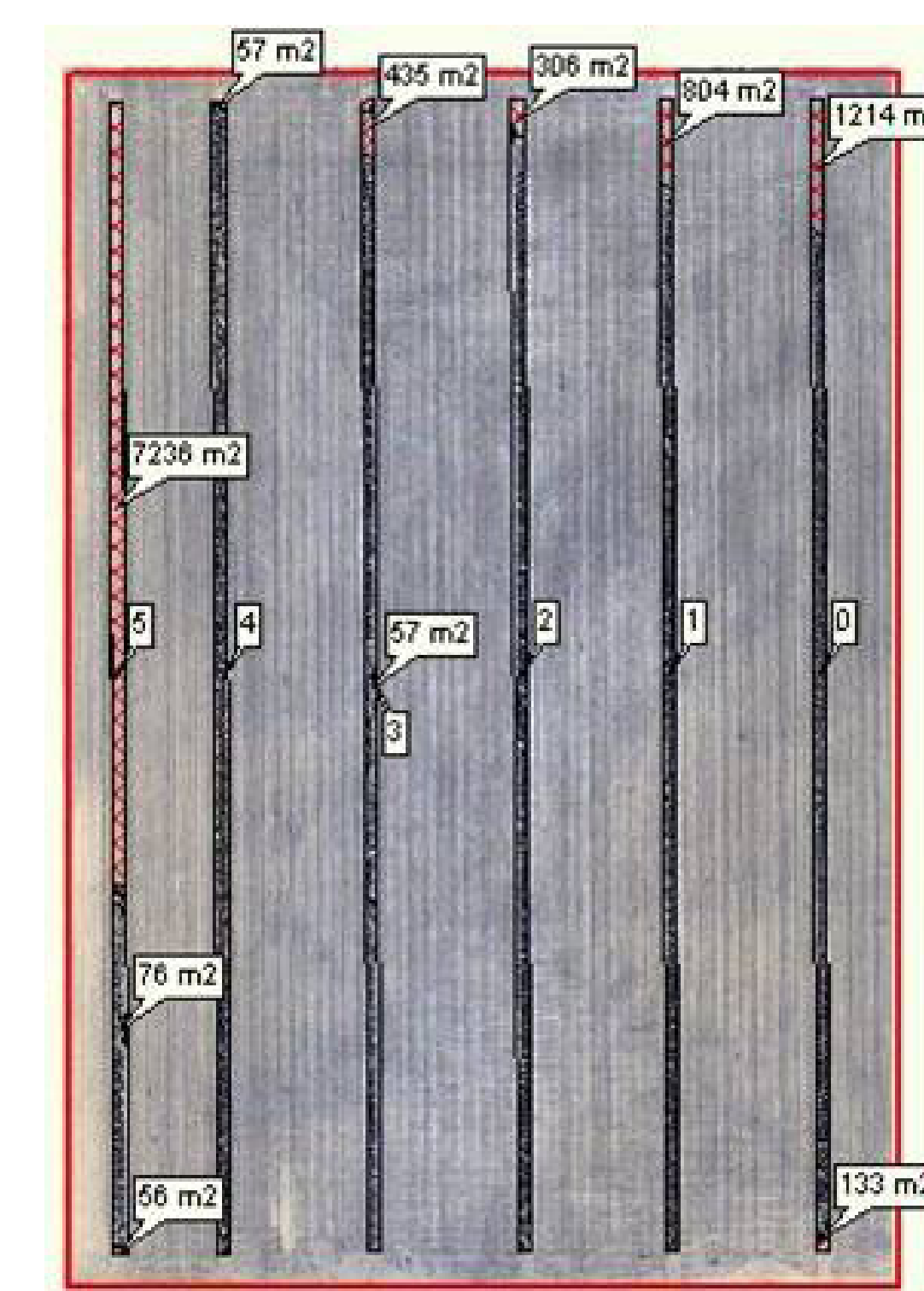
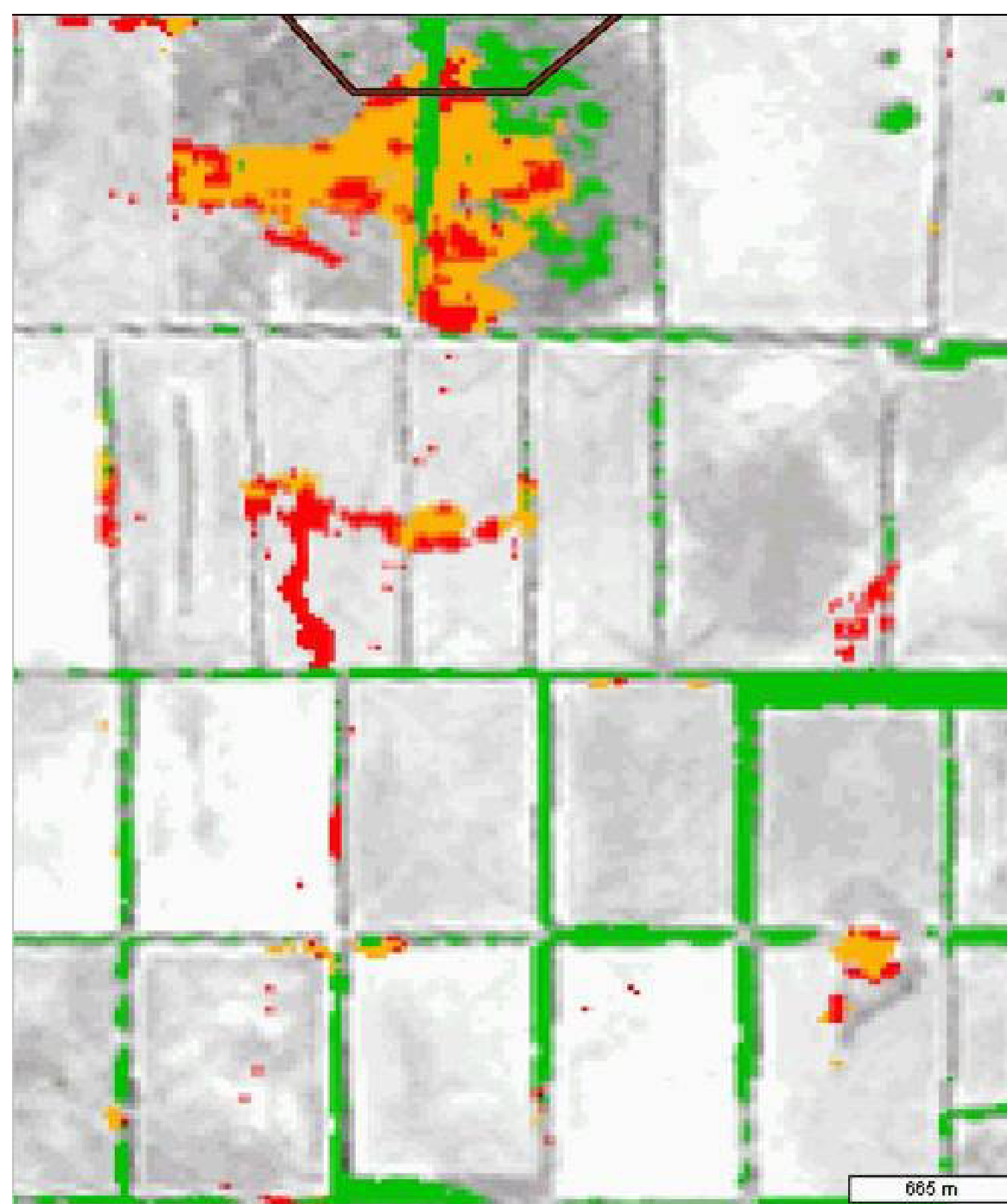
CarbonStart is the first of the tools developed and focuses on the planning of forestry-based carbon offsets projects.

Project Outcomes

CarbonStart has become the first of a series of innovative carbon accounting tools that Landgate is developing under the CarbonWatch banner that can help growers determine if their land is suitable for tree farming to gain carbon credits under the Kyoto Protocol.

CarbonStart brings together a range of useful information including satellite and aerial imagery, contours, paddock and growth variations, salinity, rainfall and general soil types, without anyone having to visit the proposed site.

For anyone who wants to start planning a tree growing project on a large or small scale, CarbonStart is a simple online planning tool that assists farmers substantiate their eligibility for carbon offsets from tree plantings and provides an indication of land suitability for such carbon-sink projects.



FOR MORE INFORMATION CONTACT:

Greg Walker Ph: 9273 7488 M: 0434 329 758
E: gregory.walker@landgate.wa.gov.au